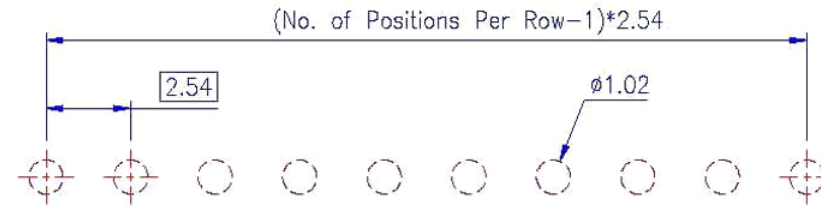
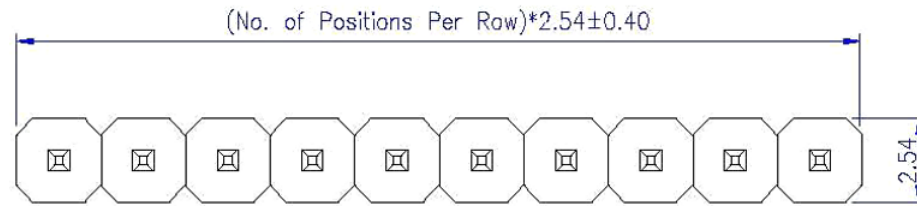
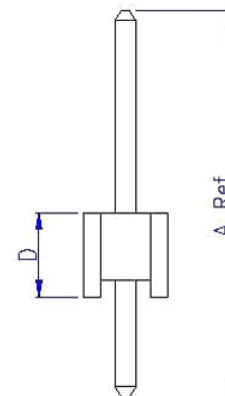
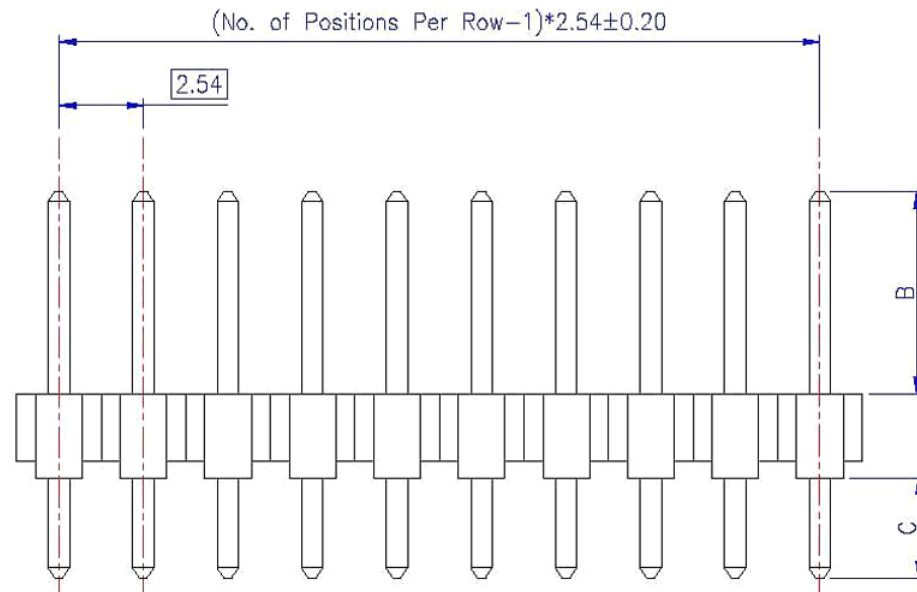


Rev.	Date	Description
A	2004/10/11	New Drawing
B	2007/04/13	Modify P/N



PCB Layout  
(Top View)



A = 9,24 (9,24 to 9,84mm)  
 B = 5,5  
 C = 1,2 - (1,2 to 1,8mm)  
 D = 2,54

SHALLIN ELECTRONICS CO., LTD.

**Material and Finish**

1. Housing: Thermoplastic (UL94V-0), Black.
2. Terminal: Sq. 0.64mm Copper Alloy, Gold Plating.

**Electrical Characteristics**

1. Current Rating: 3.0 Amp. Max.
2. Dielectric Withstand Voltage: 1000V AC RMS for 60Seconds.
3. Insulation Resistance: 1000M Ohms Min. at 1000V DC.

**Mechanical Characteristics**

1. Operating Temperature: -55°C ~ +105°C

Dimensions	Scale	Unit	Drawn By	Checked By	Approval By
0.0 ±0.30	1:1	mm	Joe	Baby	Alan
0.00 ±0.20					
0.000 ±0.10					
Drawing No. YVNxx					

2.54mm Post Header  
 PCB Mount Vertical  
 Single Row