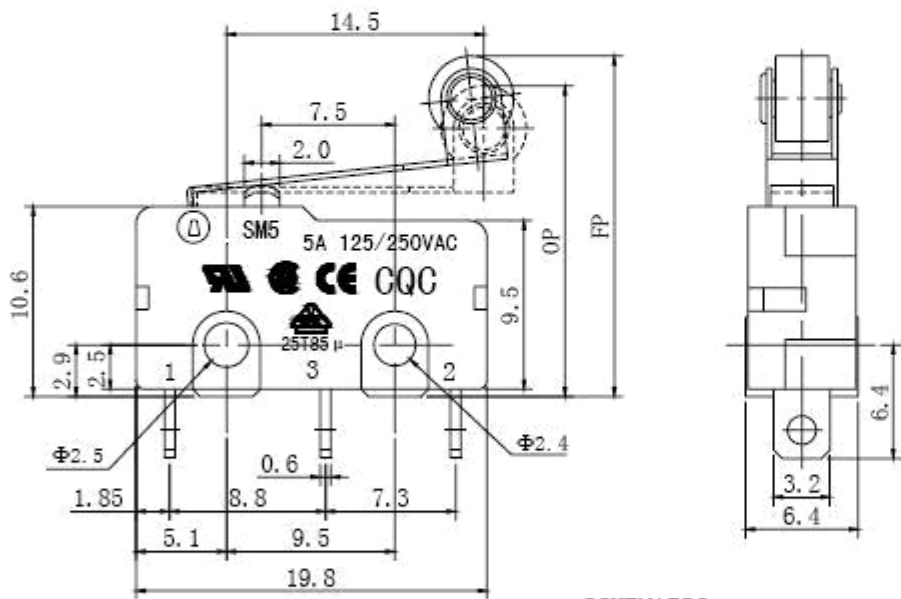


SWITCH TYPE	Micro Switches	MODEL NO.	B175F.
1. Functional spec.			
1.1 Rated Voltage	125/250VAC	1.6 Free Position	19.8±0.8mm
1.2 Rated Current	3A	1.7 Operating Position	17.8±1.2mm
1.3 Contact Resistance	≤50mΩ (Initial value)	1.8 Position Travel	
1.4 Operating Force	45±20gf	1.9 Return Force	
1.5 Bounce Time		1.10	
2. Reliable Rating			
2.1 Mechanical Life	100,000 CYCLES	2.5 Soldering Technic	Hand Soldering
2.2 Electrical Life	10,000 CYCLES	2.6 Operating Temper	-25°C - +85°C
2.3 Insulation Resistance	≥100MΩ DC500V (Initial value)	2.7 Ambient Humidity Used	<85%RH
2.4 Withstand Voltage	AC1000V 1 minute(Initial value)	2.8	
3. Dimension Drawing			



SCHEMATIC

