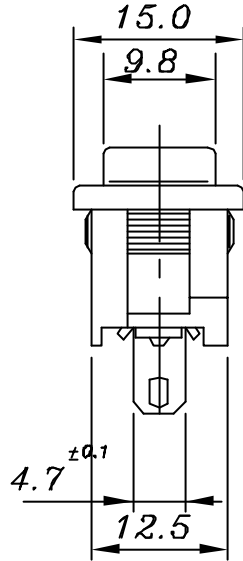
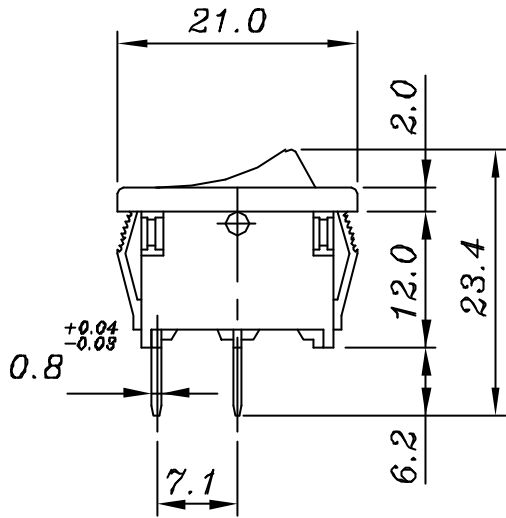
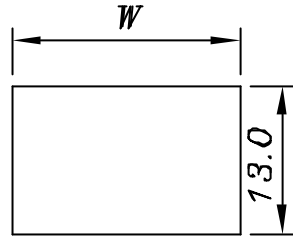
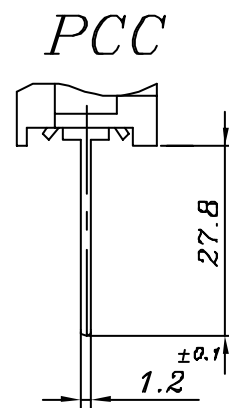
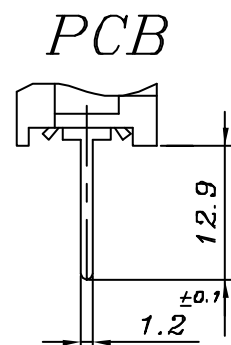
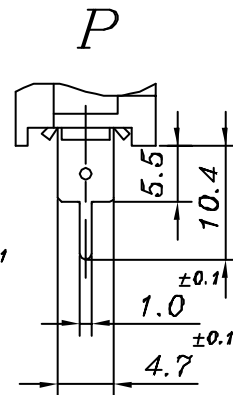
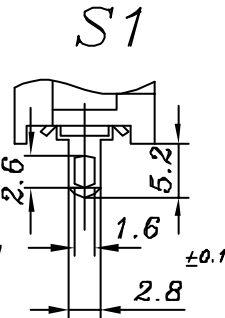
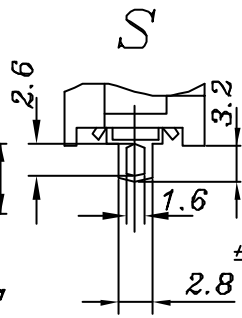
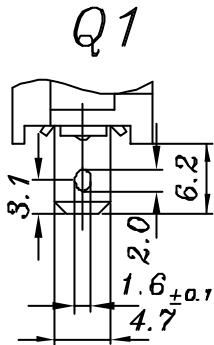
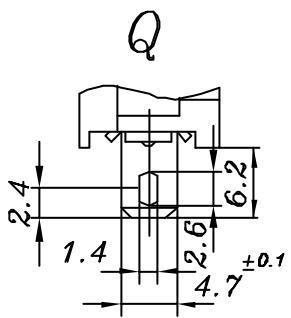


W	PANEL THICK
19.2	0.75-1.25
19.4	1.25-2.0
19.8	2.0-3.0



規格
SPECIFICATIONS:

- 迴路
CIRCUIT SPST : ON - OFF
- 定格
RATING L : 5A 125VAC L : L
K : 6A 125VAC/3A 250VAC :
H : 10A 125VAC/6A 250VAC :
- 接觸電阻
CONTACT RESISTANCE. 30m Ω Max .
- 絕緣電阻
INSULATION RESISTANCE. DC 500V 100M Ω Min .
- 耐電壓
WITHSTAND VOLTAGE. AC 1000V 1 Minute .
- 作動力
OPERATION FORCE 800±300 g .
- 電氣壽命
ELECTRICAL LIFE 10,000 Cycles At Full Load .
- 使用溫度範圍
OPERATING TEMPERATURE RANGE. -25°C~+85°C .
- 焊接
SOLDERING 280°C FOR 3 Sec .



年	月	日	更正者	更	正	記	事	△

設計	W, JUNG-TA	84/2/26	品名	JS-606系列承認圖	無註記公差	第三	
製圖	W, JUNG-TA	84/2/26	品號	JS-606A	長度±0.3 角度±	角法	
描圖	L, chun-ting	88/04/16	品號	(Q, Q1, S, S1, P, PCB, PCC)	比例	單位	MM
校對			圖號	A606-00A			
核准							
採購規範							