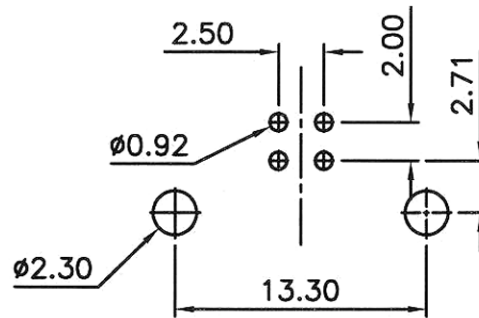
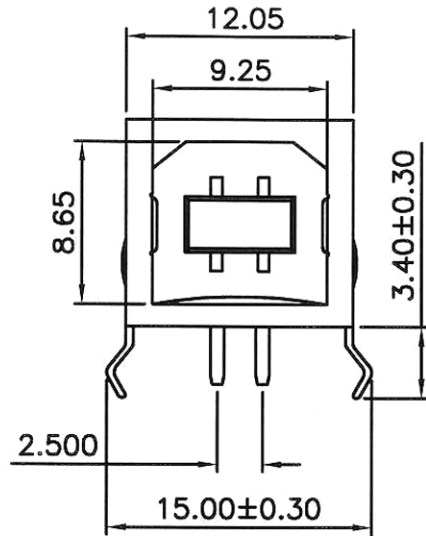
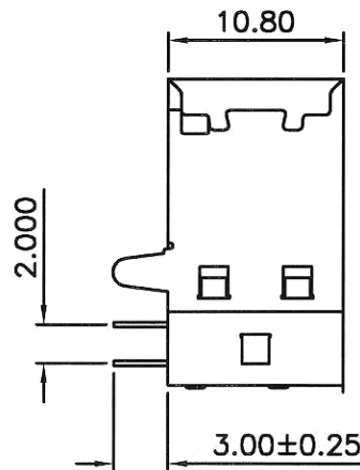
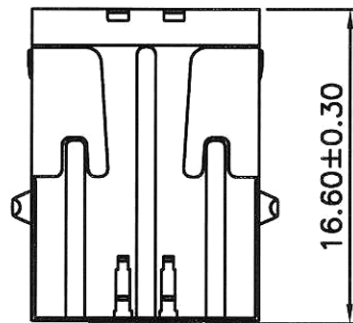


REV.	DESCRIPTION	DATE
14.2	10.8	10-13-01
	合理化尺寸標注	11-30-01
	增加LAYOUT視圖	1/22/02
	圖面更新	03-14-02



Recommand PCB Layout  
Tolerance ±0.05



### 特性: Specifications:

- 電器: **Electrical:**
  - 接觸阻抗: **Contact Resistance:**  
30 milliohms MAX.
  - 耐電壓: **Dielectric Withstanding Voltage:**  
500 V AC. AT Sea Level.
  - 絕緣阻抗: **Insulation Resistance:**  
1000 MEGA ohms MIN.
- 機構: **Mechanical:**
  - 結合力: **Mating Force:**  
4.0 KG MAX. 最大4kg.
  - 拔出力: **Unmating Force:**  
0.7 KG MIN. 最少0.7kg.
- 材料: **Material:**
  - 塑膠: **Housing: High Temperature Thermoplastics,**  
UL 94V-0 耐高溫塑膠.
  - 端子: **Contact: Copper Alloy.** 銅合金.
  - 鐵殼: **Shell: Copper Alloy.** 銅合金.
- 電鍍: **Finish:**
  - 端子: **Contact: Plated Gold in Mating Area;**  
Tin/Lead On Solder Tails.  
接觸點鍍金, 腳鍍錫鉛.
  - 鐵殼: **Shell:**
    - Tin/Lead Plating. 鍍錫鉛
    - Nickel Plating. 鍍鎳.

SHALLIN ELECTRONICS CO., LTD.

GENERAL TOLERANCE	
X*(REF)±5°	X. ±
.X° ±2°	.X ± 0.38
.XX° ±1°	.XX ± 0.25
.XXX° ± 0.5°	.XXX ± 0.13

DRAWN	胡志偉	DATE	1/22/02'
CHECK	Z-Y-He	DATE	07-09-02'
APPROVE	Y-C-Sung	DATE	07-09-02'

DWG. NO.	
PART NO.	Y99011

TITLE  
USB B Type  
R/A W/Rear Cover

REV.	05	UNIT	mm	SCALE	2.5=1
------	----	------	----	-------	-------