

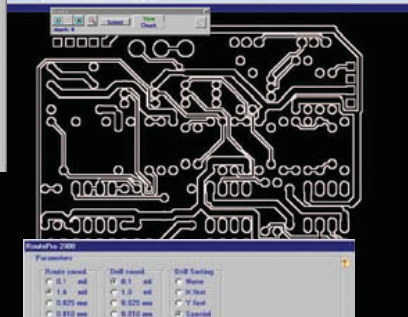
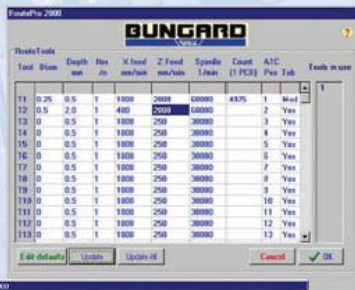
## ROUTEPRO 2005 FOR CCD MTC, ATC, CCD/2

Software- and Hardware package for direct processing of drill- and routing data on CNC systems type BUNGARD CCD (production date 1995 and later) under Windows 95...XP. Serial number of machine required for updating older machines.

Extent of delivery:

### HARDWARE:

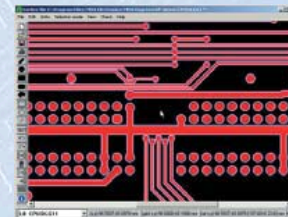
- small CPU (with DC powersupply) for Real-time processing under Windows. (120mmx180mmx40mm)
- cables



### SOFTWARE:

- Driver software for Excellon, Sieb&Meyer or HP/GL data for real-time machine control under Windows 95...XP, with comfortable user interface, including tool statistics and plausibility control
- drill and route data simultaneously displayed
- on-screen processing sequence display
- on-screen selection of drill and route vectors
- Automatic tool change, simultaneously 15+1 out of 99 tools per job.
- selectable tool change positions (for ATC machines only)
- Drill break detector
- Software controlled spindle, quick stop, DC brake and chuck
- All machine parameters software controlled and configurable
- Easy to use teach-in feature for drill data
- Step definition: 1 mil (= 0,0254 mm), precision +/- 1 step, prepared for microstep mode
- Maximum speed per axis: 93 mm/s (= 5.6 m/min)

### DATA CONTROL CONVERSION ISOLATION MILLING



### ISOCAM

The situation:

You designed a PCB with your CAD package and now want to make a prototype or a small series by etching or by isolation milling

The questions:

- How do you check and correct the drill-, rout- and plot-data, their dimension and layer registration?
- Do you want to make your prototype by isolation milling?

The answers:

- IsoCAM reads your Gerber, HP/GL, and drill files. It offers you editing facilities like shift, mirror, copy, paste, delete and more on single vectors, groups of elements or entire layers.
- IsoCAM can convert data into all of the above mentioned formats. Windows Post-script output allows making film artworks.
- IsoCAM comes with a worthy isolation milling converter with the feature of using two different tools in once and with the possibility of creating copper routout areas.
- The aperture table and the tool rack can be edited, saved and printed. A converter automatically reads the aperture information from most CAD packages.

### ISOLATOR

Another, even more sophisticated CAM package is available. This should be your favorite choice if you

- need more than just an isolation milling engine or
- want to make front panels or do cut-out routing of PCBs or
- have to prepare board data for external customers or
- need data uplink to PCB production houses or
- have to prepare data for both cnc machines and photoplotter artwork at a time

In any of these cases ISOLATOR is superior because it was made for universal data preparation in the true meaning of the word CAM, and it is derived from a family of software that has a strong background in PCB industry.

